

Lift LIMITED

MINI CRANES



www.liftminicranehire.co.uk

THE BIG LITTLE CRANE COMPANY

We are a competitive mini crane hire company based in Leicester, and pride ourselves on our reliability and workmanship. We offer competitive rates for our equipment and services, we also offer a 24 hour manned telephone service to aid and assist our clients should the need arise.



Applications

- Tunnel operations
- Rooftop operations
- Exhibition installations
- Plant maintenance works
- Confined and restricted access
- Steel and glass installations
- Stone and monument installations
- Restoration work and cladding
- Stage, shopping mall and stadium installations
- Food production warehouses and air con systems
- Power stations, cemeteries, film sets & much more!

OUR OFFER

- **Compact Crane Hire** - we have a range of small versatile compact 'spider' type cranes. Available to hire for long term contracts where we can offer one day training, should this be beneficial to the client. Or for smaller purposes such as one off lifts, dismantling or erecting purposes. Whatever the job, we can help.
- **Lifting Accessories** - we offer a wide range of lifting attachments and equipment to assist difficult scenarios such as glass handling, material handling and stone and cladding. We offer vacuum lifting attachments from 0 to more than 1 tonne, and glass trolleys for handling and movement.
- **Slinger / Banksmen** - should the need arise we have many competent and experienced Slingers available for hire, all over the UK.
- **Lift Supervisors / Crane Operators** - We can provide experienced and competent operators to safely and efficiently undertake any lift situation. Our lift supervisors will take control and responsibility of the safe operation of the work to be done.
- **Appointed Person / Contract Lift** - We can provide a service that can give you piece of mind when faced with a difficult scenario; our Appointed Person service will take on the lift for you. We can visit the site, collect the necessary information, produce the documentation and complete the job safely then hand control back to the client.
- **Training and Support** - Our one-day training course is designed to ensure operators are fully familiarised with procedures for the safe operation of mini cranes. Technical support is available either over the phone, or through a site visit.



Darren Lee
Construction Ltd

Our duties can often include the need to provide skilled labour personnel when erecting or dismantling projects, this work is carried out by our sister company **DARREN LEE CONSTRUCTION** and always ready to assist our clients.
www.darrenleeconstruction.co.uk

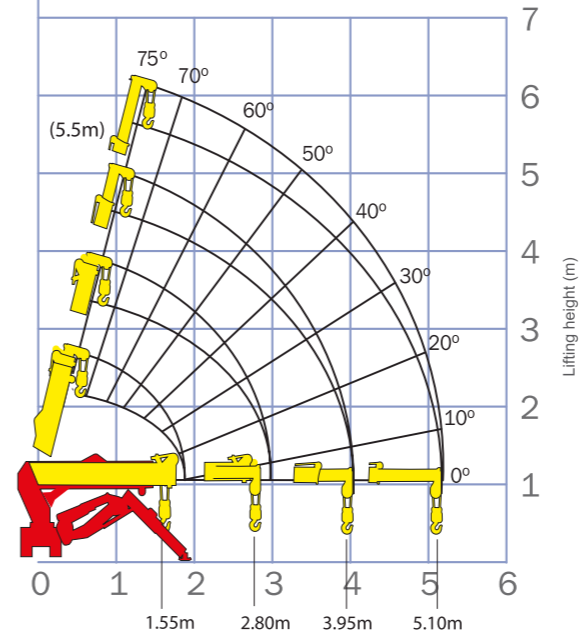


LIFT MAEDAMC104 (0.995t x 1.1m)



- Super Slim Body (600mm)
- Multi configuration outrigger option
- 995kg at 1.1m
- Remote Control
- Rubber Tracks
- New Hydrostatic Transmission
- 500Kg Searcher hook attachment

Working Range



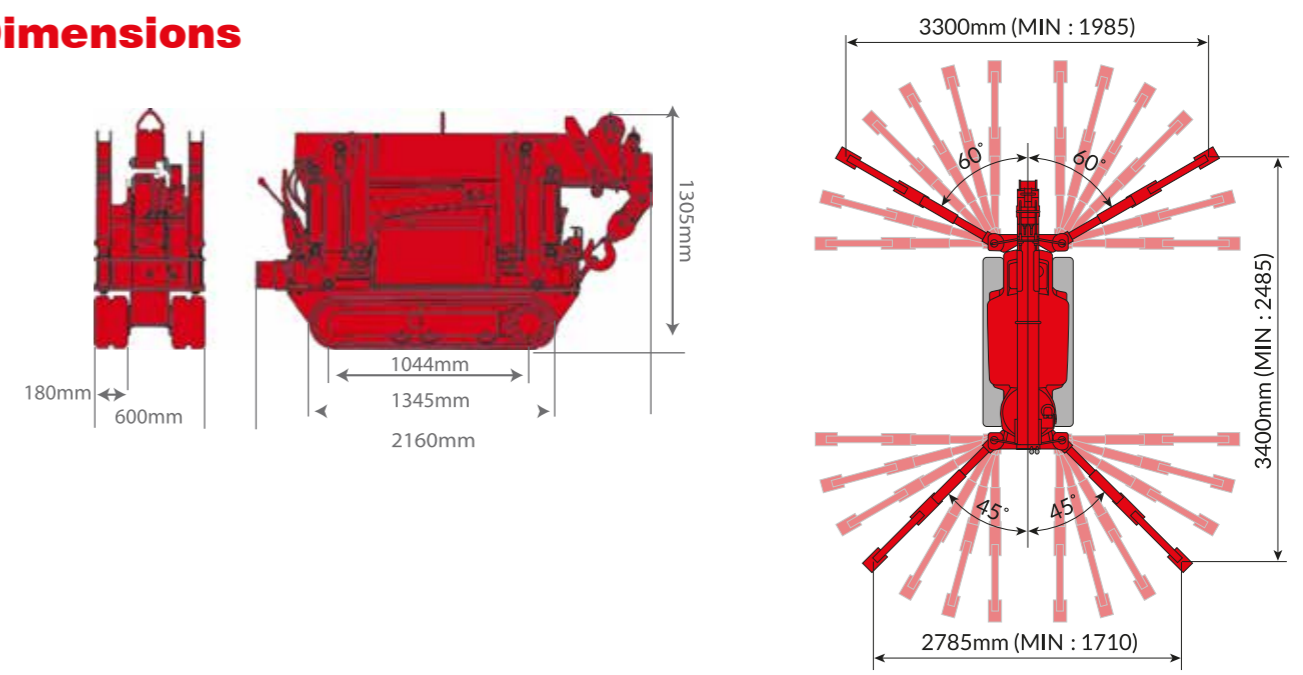
Stage	Boom Length	Working radius (m)	Outrigger Max-extended (kg)	Outrigger Min-extended (kg)	1.2m	1.3m	1.4m	1.5m	1.6m	1.7m	1.8m
First Stage	FIRST STAGE EXTENDED 1.85M BOOM LENGTH	Working radius	<1.1	<1.1	1.2	1.3	1.4				
		Outrigger	Max-extended	995	980	890	790				
Second Stage	SECOND STAGE EXTENDED 3M BOOM LENGTH	Working radius	<1.1	<1.1	1.3	1.5	2.0	2.5	2.8		
		Outrigger	Max-extended	995	980	890	750	620	550		
Third Stage	THIRD STAGE EXTENDED 4.15M BOOM LENGTH	Working radius	<1.8	<1.8	2.0	2.5	2.8	3.0	3.5	3.93	
		Outrigger	Max-extended	820	750	620	550	500	380	300	
Fourth Stage	FOURTH STAGE EXTENDED 5.3M BOOM LENGTH	Working radius	<2.4	<2.4	2.5	2.8	3.0	3.5	4.0	4.5	5.1
		Outrigger	Max-extended	650	620	550	500	380	300	250	200
		Outrigger	Min-extended	295	280	210	185	140	100	75	60

Crane Specifications

Crane capacity	capacity:	0.995t x 1.1m
Max working radius	max:	5.1m
Max lifting height	approx:	5.5m
Rope length	max:	32m (single fall)
Dimensions	folded:	600m (W) x 2160mm (L) x 1305 (H)
Weight	unladen:	1050kg
Point loadings	Due to the many variables involved, point loadings are only available on request	
Hook speed	approx:	3.2m / min (4 fall)
Telescopic system	boom length:	5.30m
	telescoping speed:	3.45m / 20sec
	boom type:	Fully automatic 4 section pentagonal telescopic boom
Derricking angle/speed	approx:	0 - 75° / 11 seconds
Slewing angle/speed	approx:	360° (continuous) 1.3min (rpm)
Traction system	drive:	Hydrostatic, step-less forward and reverse
	travel speed:	0 - 1.9km/h
	gradability:	20°
	track ground length:	1044mm (180mm track)
	track ground pressure:	0.29 kgf/cm ²
	track width:	180mm
Engine	manufacturer:	Maeda Cranes
	fuel:	Petrol / LPG
	maximum output:	5.5kW, 4P 380v
	starting method:	Key / pull start (cold start)
	tank capacity:	-
Standard equipment	overwinding alarm, computer controlled intelligent voice warning system, radio remote control, intelligent throttle activation	
Optional equipment	1 fall hook block, LPG dual power, low marking tracks	



Dimensions

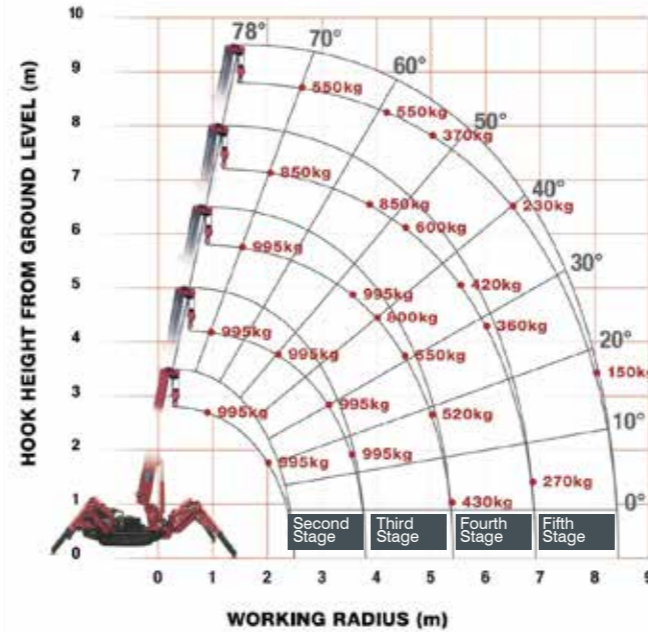


LIFT UNIC-095 (0.995t x 3.5m)



- Total width 0.6m
- Max working radius 8.41m
- Max boom length 8.65m
- Petrol powered, optional LPG dual, electric dual and diesel
- Multi-position configurable outriggers
- Intelligent voice warning system
- Radio remote control as standard
- Intelligent throttle activation for economy and ecology
- Optional 800kg searcher hook

Rated Loads



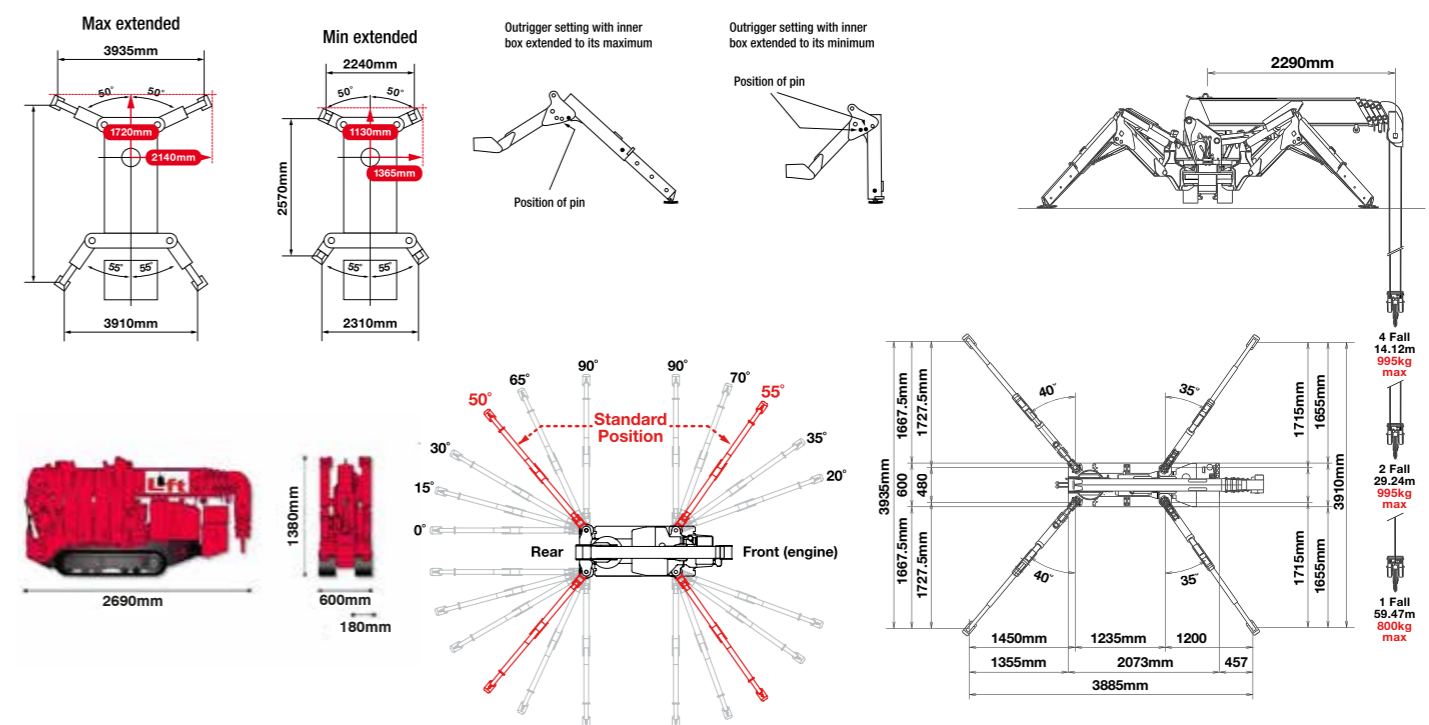
Stage	Boom Length (m)	Working radius (m)	Outrigger Max-extended (kg)	Outrigger Min-extended (kg)	1.0	1.4	1.5	1.8	2.0	2.5	3.0	3.5	3.835
Second Stage	2.53 - 4.075M	up to 1.0	995	995	995	995	995	995	995	995	995	995	900
		up to 1.4	995	995	995	995	995	995	995	995	995	995	250
Third Stage	4.075 - 5.61M	up to 2.2	995	995	995	995	995	995	995	995	995	995	900
		up to 2.5	995	995	995	995	995	995	995	995	995	995	250
Fourth Stage	5.61 - 7.13M	up to 3.3	850	850	750	600	500	420	360	320	270	230	200
		up to 3.8	420	340	300	250	190	140	100	80	60	40	30
Fifth Stage	7.13 - 8.65M	up to 3.8	550	550	450	370	310	270	230	200	150	130	130
		up to 4.1	350	290	250	200	160	130	100	70	40	30	30

Crane Specifications

Crane capacity	capacity:	0.995t x 3.5m
Max working radius	max:	8.41m
Max lifting height	approx:	8.8m
Rope length	max:	11.7m (4 fall), 23.4m (2 fall), 46.8m (1 fall)
Dimensions	folded:	2690mm
		(2905mm diesel & electrical dual) (l) x 600mm (w) x 1380mm (h)
Weight	unladen:	1850kg (1950kg electric option, 1920kg diesel option, 2090kg diesel and electric dual option)
Point loadings	Due to the many variables involved, point loadings are only available on request	
Hook speed	approx:	10m/min (with 4 layers and 4 falls)
Telescopic system	boom length:	2.53 - 8.65m
	telescoping speed:	6.12m/20 seconds
	boom type:	5 section hydraulically telescoping boom, hexagonal box construction
Derricking angle/speed	approx:	0 - 78°/11 seconds
Stowing angle/speed	approx:	360° (continuous) 1.5min ⁻¹ (rpm)
Traction system	drive:	hydrostatic, step-less forward and reverse
	travel speed:	0 - 2.3km/h
	gradability:	20°
	track ground length:	1050mm
	track ground pressure:	48kPa (0.49kg/cm ²)
	track width:	180mm
Engine	manufacturer:	Mitsubishi (Kubota diesel)
	fuel:	petrol (LPG dual, electric dual and diesel options)
	maximum output:	9.6kW (13PS) / 2500min ⁻¹ (rpm)
	starting method:	electric and recoil start as standard
	tank capacity:	6 litres
Electric motor	power:	3.7kW
	voltage:	400v AC 50/60Hz
Standard equipment	overload warning device, overload warning lamps, computer controlled intelligent voice warning system, radio remote control, intelligent throttle activation	
Optional equipment	1 fall hook block, 2 fall hook block, LPG dual power, mains electric dual power (400v), diesel engine, low marking tracks,	



Outrigger Positions

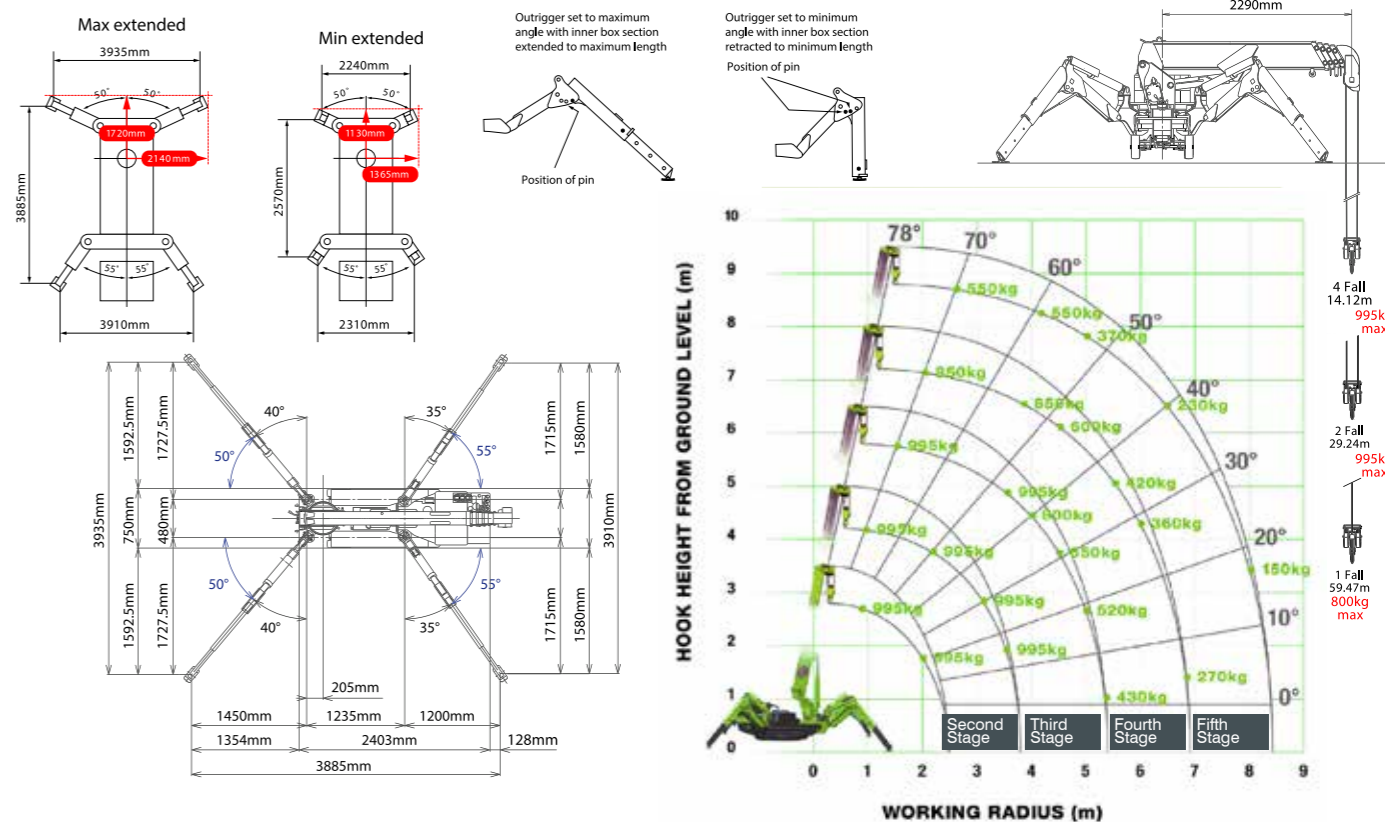


LIFT ECO095 (0.995t x 3.5m)



- Battery powered
- Total width 0.75m
- Max working radius 8.41m
- Multi-position configurable outriggers
- Operator control of outrigger extension
- Intelligent voice warning system
- Low-marking wheels

RATED LOADS & OUTRIGGER POSITIONS



SECOND STAGE EXTENDED 2.53 - 4.075M BOOM LENGTH

Working radius	m	up to 1.0	1.4	1.5	1.8	2.0	2.5	3.0	3.5	3.835
Outrigger	kg	995	995	995	995	995	995	995	995	900
	kg	995	995	995	995	995	650	490	350	250

THIRD STAGE EXTENDED 4.075 - 5.61M BOOM LENGTH

Working radius	m	up to 2.2	2.5	2.9	3.0	3.5	4.0	4.5	5.0	5.37
Outrigger	kg	995	995	995	995	995	800	650	520	430
	kg	800	650	530	500	380	280	220	160	120

FOURTH STAGE EXTENDED 5.61 - 7.13M BOOM LENGTH

Working radius	m	up to 3.3	3.8	4.0	4.5	5.0	5.5	6.0	6.5	6.89
Outrigger	kg	850	850	750	600	500	420	360	320	270
	kg	420	340	300	250	190	140	100	80	60

FIFTH STAGE EXTENDED 7.13 - 8.65M BOOM LENGTH

Working radius	m	up to 3.8	4.1	4.5	5.0	5.5	6.0	6.5	7.0	8.0	8.41
Outrigger	kg	550	550	450	370	310	270	230	200	150	130
	kg	350	290	250	200	160	130	100	70	40	30

SEARCHER HOOK 700kg



Crane capacity	Eco-095:	0.995t x 3.5m
Max working radius	max:	8.41m
Max lifting height	max:	8.9m
Rope length	max:	14.12m (4 fall), 29.24m (2 fall), 59.47m (1 fall)
Dimensions	folded:	2730mm (l) x 750mm (w) x 1560mm (h)
Weight	unladen:	2425kg (2490kg with jib)
Point loadings	Due to the many variables involved, point loadings are only available on request	
Hook speed	approx:	4.7m/min (with 4 layers and 4 falls)
Telescopic system	boom length:	2.53 - 8.65m
	telescoping speed:	6.12m/40 seconds
	boom type:	5 section hydraulically telescoping boom, hexagonal box construction
Derricking angle/speed	approx:	0 - 78°/21 seconds
Stewing angle/speed	approx:	360° (continuous) 1.5 rpm
Travelling system	drive:	hydraulic motor wheeled drive
	travel speed:	1.5-1.8km/h
	steering angle:	50° left and 50° right
	min. turning radius:	outer 1990mm x inner 510mm
	gradeability:	± 20° (vertical) 10° (traverse)
Size of tyres	front:	4.00-8 (wheel RIM 3.00 D-8)
	rear:	3.50-5 (wheel RIM 3.00 SP-5)
Power source	power:	3.1kW (AC motor)
	voltage:	48v DC rechargeable battery
Battery charger	charger:	20Q/240v single phase (15A)
Standard equipment	radio remote control, overwinding alarm, computer controlled intelligent voice warning system, multi-function operation by radio remote control, intelligent throttle activation, automatic hook stow, load indication, turn-over protection system with stability warning lamps and alarm	
Optional equipment	1 fall hook block, 2 fall hook block, 700kg capacity searcher hook, 700kg fly jib with single part line	

Introducing the latest in mini crane engineering, the UNIC battery powered Eco-095 model provides fume-free lifting for sensitive environments. Ideal for food processing plants, listed buildings, shopping centres, airports and clean environments, these unique mini cranes are powered by a rechargeable 48v battery yet retain all the lifting power of our standard models. Innovative features include low-marking wheels which enable the cranes to work on light-coloured or polished surfaces.



DIMENSIONS

