

## NATIONWIDE DEPOTS

- GUILDFORD
- LONDON
- NORWICH
- BIRMINGHAM
- NEWPORT
- MANCHESTER
- NORTHUMBERLAND

## TRADING ADDRESS

NTD National Tracked Dumper Hire Ltd,  
Weston Yard,  
Albury, Surrey  
GU5 9AF

**0844 376 0051**  
hiredesk@ntdh.co.uk

[www.ntdh.co.uk](http://www.ntdh.co.uk)



# NTD

NATIONAL TRACKED DUMPER HIRE LTD



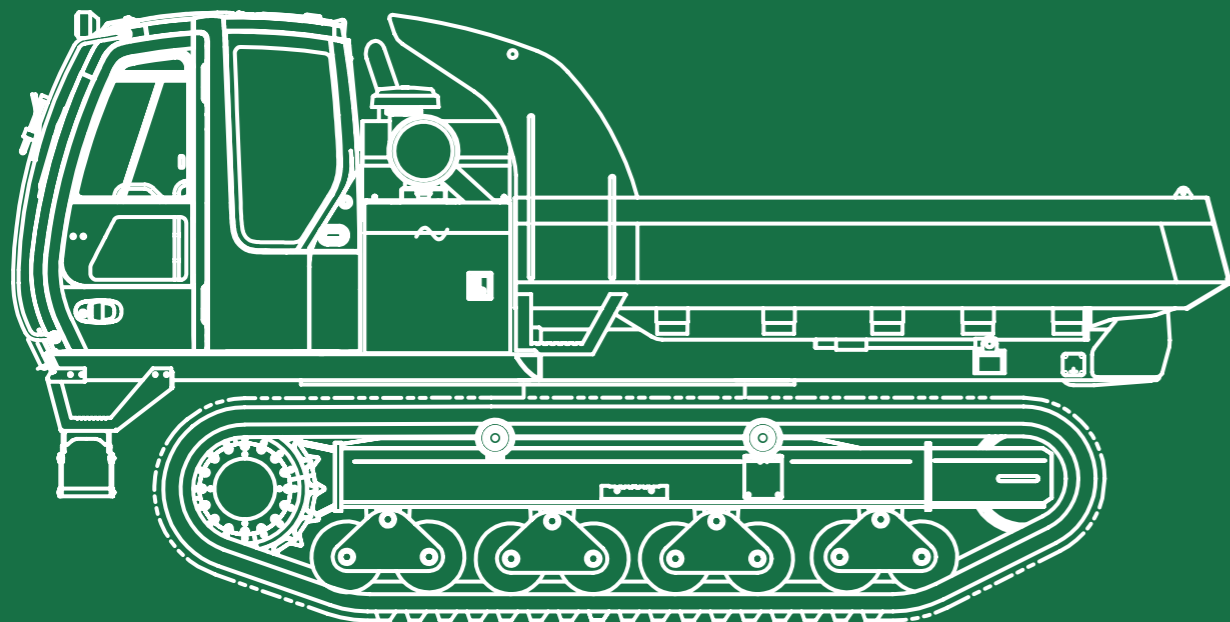
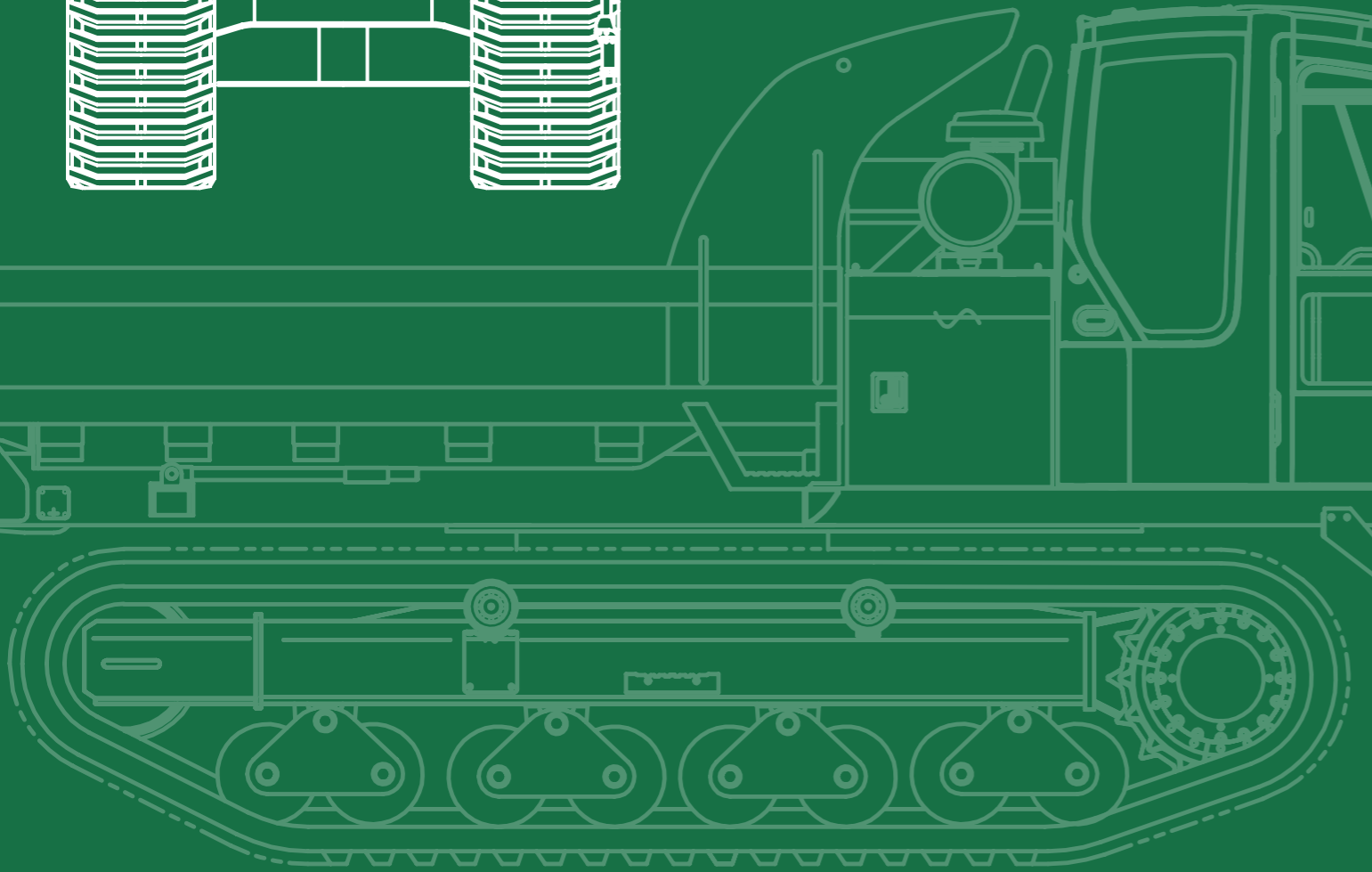
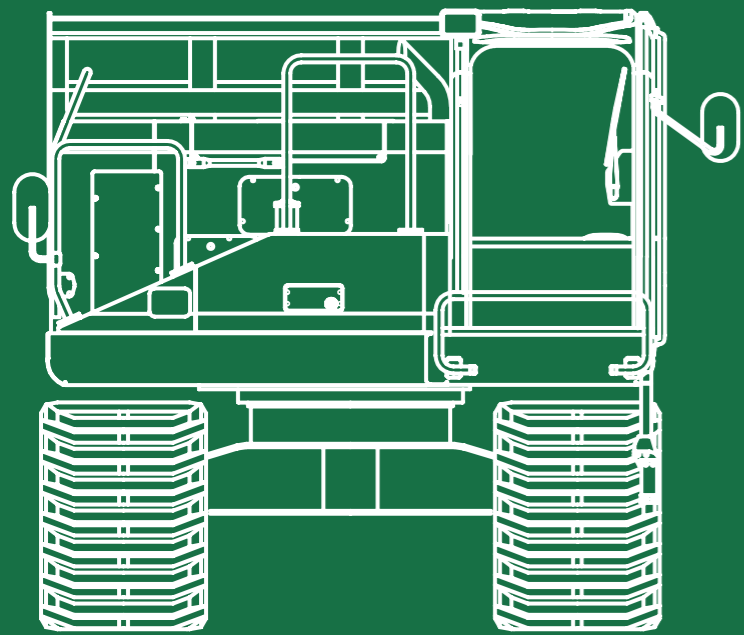
# NTD

All details correct at time of issue,  
November 2020. Issue no. NTDHB08

©2017 NTD NATIONAL TRACKED DUMPER HIRE LTD

# 0844 376 0051

[www.ntdh.co.uk](http://www.ntdh.co.uk)



# INDEX

- 1 ABOUT US
- 2 ENVIRONMENT
- 3 SAFETY FIRST
- 4 CUSTOMER CARE
- 5 2.5 TONNE RIGID/SWIVEL
- 7 3.5 TONNE SWIVEL
- 9 5 TONNE RIGID
- 11 6 TONNE SWIVEL
- 13 7 TONNE RIGID
- 15 7 TONNE 360° SLEW
- 17 11 TONNE RIGID
- 19 11 TONNE 360° SLEW
- 21 13.2 TONNE 360° SLEW
- 23 AERIAL IMAGES
- 25 TRACKED CARRIERS

# ABOUT US

NTD LAUNCHED IN JANUARY 2015. THE AIM OF THE BUSINESS IS TO OFFER CUSTOMERS THE LATEST, SAFEST, GREENEST, MOST RELIABLE, MODERN TRACKED DUMPERS AVAILABLE IN THE UK. THE UNRIVALLED QUALITY OF THE EQUIPMENT IS MATCHED WITH A DESIRE TO PROVIDE THE VERY BEST IN CUSTOMER SUPPORT. ATTAINING ISO 9001 WITHIN THE FIRST YEAR OF TRADING DEMONSTRATES NTD'S MISSION TO EXCEL IN ALL AREAS OF THEIR CUSTOMER EXPERIENCE.

SIGNIFICANT ONGOING INVESTMENT FROM DAY ONE HAS QUICKLY ESTABLISHED NTD WITH THE YOUNGEST AND BROADEST FLEET OF TRACKED DUMPERS AVAILABLE IN THE UK. THE FLEET IS SUPPORTED WITH THE UK'S MOST SUBSTANTIAL TRACKED DUMPER DEPOT NETWORK AND FIELD SERVICE TEAMS TO ENSURE THE HIGHEST POSSIBLE LEVELS OF CUSTOMER SUPPORT IS PROVIDED.

**Putting our customers first.** We regularly meet our customers to understand their requirements. We then pass on this feedback to our suppliers and the manufacturers of our equipment to help drive innovation, safety and environmental improvements in the equipment we offer.

Tracked dumpers minimise the damage to ground conditions, especially in soft or on steep terrain which allows many sites to carry on working when the use of wheeled machines may have halted works previously.

By understanding customers feedback, NTD have been instrumental in the reintroduction to the UK market of modern 360° slewing tracked dumpers. These machines offer further benefits to standard swivel skip or rigid tracked dumpers because the operator can always be driving forward and there is rarely a need to reverse. The advantage of having the upper structure be able to rotate is that NTD's slewing tracked dumpers reduce the need to turn using the tracks at the end of each journey which saves both ground conditions and track wear.


NTD offer machines from 2.5 tonne payloads through to 13.2 tonne payloads with swivel skip or 360° models available in various sizes.



# ENVIRONMENT

AT NTD WE ARE COMMITTED TO INVESTING IN ULTRA-EFFICIENT MACHINERY MINIMISING OUR IMPACT ON THE ENVIRONMENT AND REDUCING OUR CUSTOMERS RUNNING COSTS.

Our Eco-friendly machines offer the latest engines with the lowest emissions and the very best fuel economy (fuel savings of up to 30% from conventional machines). All of our tracked dumpers are compliant with all UK and EU regulations.

 All of our machines are supplied as standard with the highest quality **biodegradable hydraulic oil** available.



# SAFETY FIRST

In our commitment to provide only the safest equipment to our customers, NTD's entire fleet is sourced from reputable UK dealers of Morooka, Yanmar, Wacker Neuson and Prinoth tracked dumpers. All of which have been supplied from the manufacturer directly to European standards.

At NTD we are able to offer additional safety features on all of our machines by exceeding both the manufacturers and current legislative conformity here in the UK and EU.

## FEATURE ICONS

YOU WILL FIND FEATURE ICONS UNDER EACH CHART THROUGHOUT OUR FLEET OF TRACKED DUMPER PAGES. PLEASE CALL US WITH ANY QUERIES.



### ROPS OPERATORS CAB

Roll over Protection System.



### BIODEGRADABLE HYDRAULIC OIL

All of our machines are supplied as standard with the highest quality **biodegradable hydraulic oil** available.



### HYDRAULIC ISOLATION SYSTEM

The machine hydraulics are isolated with a "dead mans" lever.



### SEATBELT BEACON SYSTEM

When fastened the flashing green beacon above the cab is illuminated.



### REVERSING CAMERA

Reversing Camera System fitted to all closed cab machines.



### 360° CAMERA

360° Birdseye Camera System. Cameras on every side of the machine merge together on a 7 inch colour monitor.



### 360° SLEWING

Allows the upper structure to slew 360° independently of the track frame.

# CUSTOMER CARE

We offer the very best nationwide depot network and product support available - with 7 national depots spread over the UK and over 40 service engineers, complimented with main dealer back up, we can support you and our machines wherever you are throughout the UK.

Our central hire facility makes it faster and easier to source equipment for your project anywhere in the UK. Your account will be managed by our specialist team, who will take the time to understand your business and individual hire requirements.

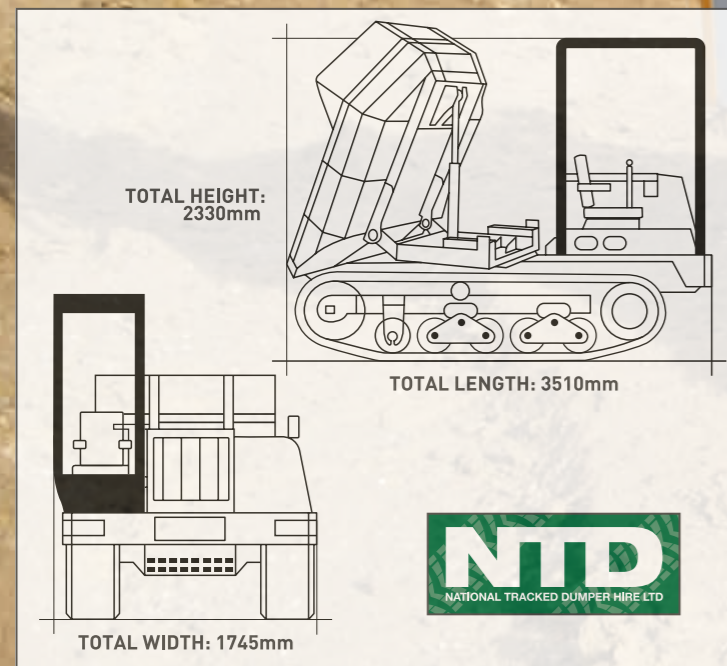
Site visits can also be arranged if required, just ask a member of our team who will be happy to arrange this for you.



# 2.5 TONNE RIGID/SWIVEL

MODEL	MAX PAYLOAD	MACHINE WEIGHT	FUEL CAPACITY	MAX TRAVEL SPEED	GROUND PRESSURE UNLOADED	GROUND PRESSURE LOADED	SLEW RADIUS
MST-300VD	2500kg	2685kg	61 Litres	9 kph	0.30kg/cm <sup>2</sup>	0.57kg/cm <sup>2</sup>	N/A
MST-300VDR	2500kg	2710kg	61 Litres	9 kph	0.30kg/cm <sup>2</sup>	0.57kg/cm <sup>2</sup>	1600mm

The Morooka MST300VD and MST300VDR are our smallest tracked dumpers in the fleet. Both machines are equipped with a Bi-Directional seat system, allowing these dumpers to be used in both the forward and rear tip configuration. This set up especially useful on sites where access and manoeuvring are restricted. Both machines have an impressive power to weight ratio with the options of a straight tip rigid body or swivel skip arrangement.

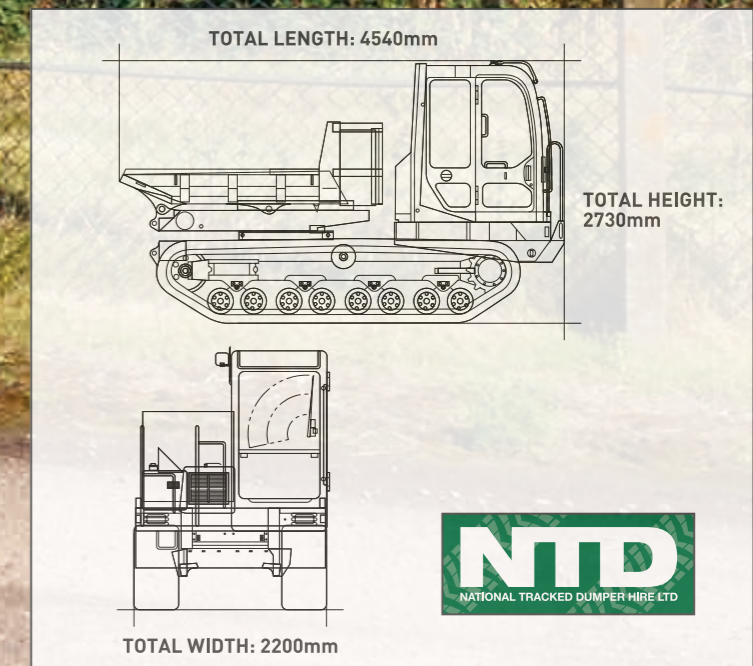


# 3.5 TONNE SWIVEL

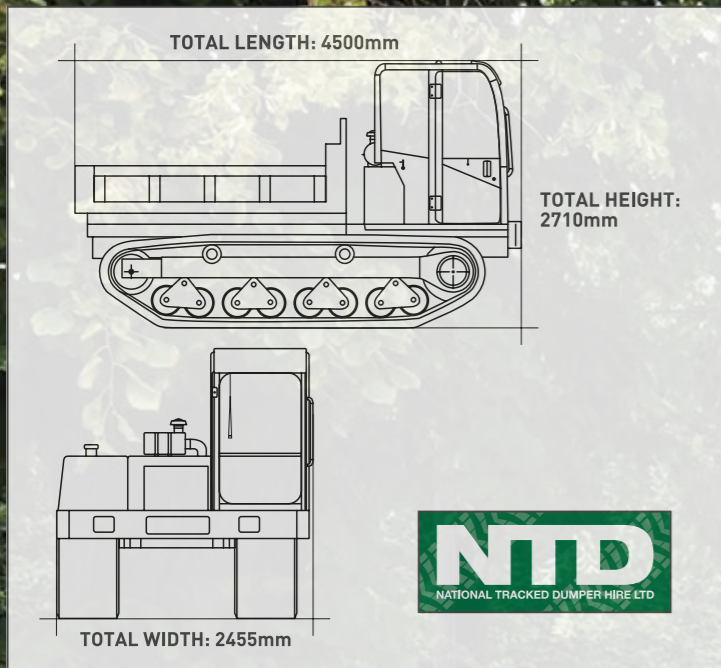
MODEL	MAX PAYLOAD	MACHINE WEIGHT	FUEL CAPACITY	MAX TRAVEL SPEED	GROUND PRESSURE UNLOADED	GROUND PRESSURE LOADED	SLEW RADIUS
C50R-5 TV	3500kg	6042kg	148 Litres	9.2 kph	0.21kg/cm <sup>2</sup>	0.33kg/cm <sup>2</sup>	2615mm

The Yanmar C50R-5 TV are prepared for EU Stage 5 regulations. Equipped with a 180° slewing skip and rotating operators seat, allowing the operator a 3-sided tip operation. Making this machine a very useful tool for material handling.

Having a closed air conditioned and heated operators cab, and a swivel seat system allowing the option of a forward or rear tipping set up, this machine is a perfect choice for dusty sites and winter months.



# 5 TONNE RIGID



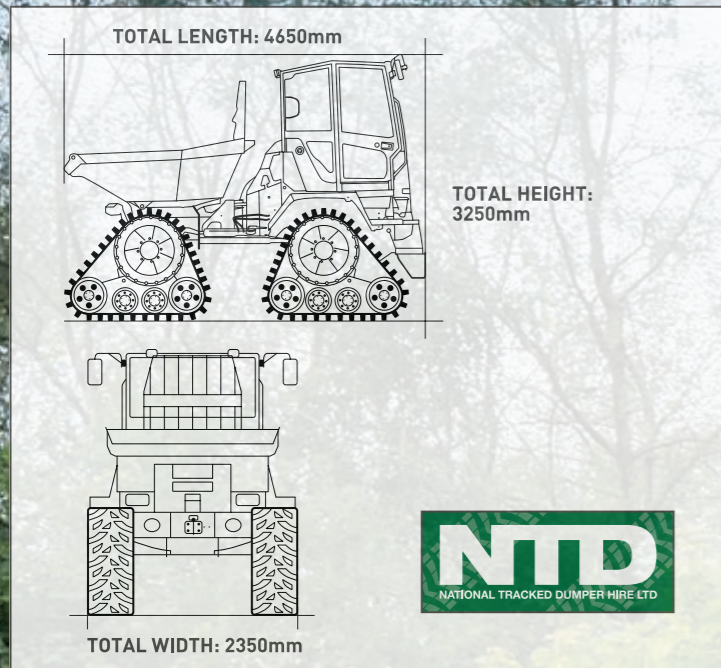
MODEL	MAX PAYLOAD	MACHINE WEIGHT	FUEL CAPACITY	MAX TRAVEL SPEED	GROUND PRESSURE UNLOADED	GROUND PRESSURE LOADED
MST-800VD	5000kg	7200kg	130 Litres	11 kph	0.22kg/cm <sup>2</sup>	0.38kg/cm <sup>2</sup>

Flat body and drop down sides makes this machine a great tool carrier as well as a tip body dumper. Low ground pressure and great payload ability combined with a large fuel tank and good tracking speeds make this mid-sized tracked dumper a popular choice for many sites.

Optional towing hitch available.



# 6 TONNE SWIVEL



MODEL	MAX PAYLOAD	MACHINE WEIGHT	FUEL CAPACITY	MAX TRAVEL SPEED	GROUND PRESSURE UNLOADED	GROUND PRESSURE LOADED
DV60	6000kg	6930kg	80 Litres	16 kph	0.30kg/cm <sup>2</sup>	0.57kg/cm <sup>2</sup>

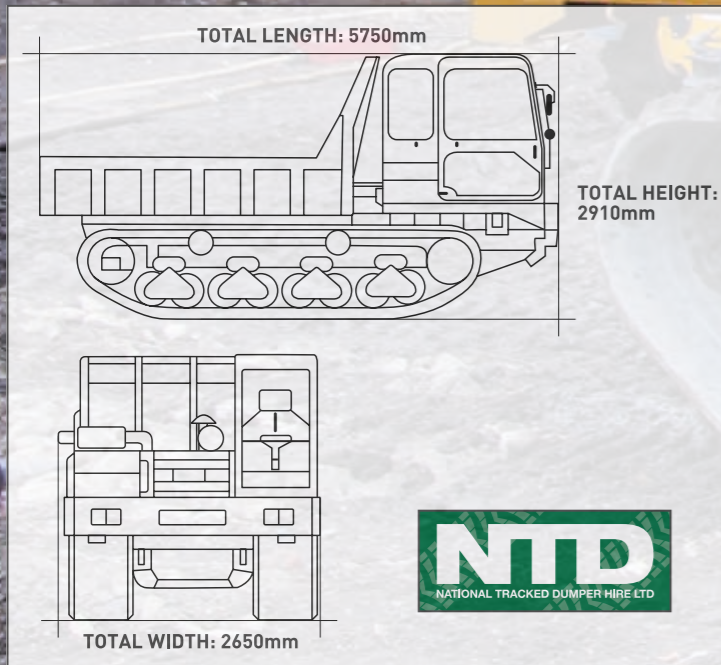
The Dual View 4-T is an exciting and powerful addition to our mid-sized range of tracked dumpers and comes equipped with a payload ability of 6 tonne. Its innovative Dual View system allows the driver to turn the seat and console 180° which guarantees unrestricted visibility and ensures maximum safety at all times. The unique **Four-Track system** has been designed specifically to cope with difficult topographical terrains and sensitive surface conditions, minimising its impact on the environment. An attractive alternative to four-wheeled loaders and two-tracked carriers, the DV60 offers high levels of operational efficiency, economy and environmental compliance.



# 7 TONNE RIGID

MODEL	MAX PAYLOAD	MACHINE WEIGHT	FUEL CAPACITY	MAX TRAVEL SPEED	GROUND PRESSURE UNLOADED	GROUND PRESSURE LOADED
MST-1500VD	7000kg	10900kg	156 Litres	11 kph	0.21kg/cm <sup>2</sup>	0.28kg/cm <sup>2</sup>

This tracked dumper offers the perfect combination of payload and performance. These rigid rear tip tracked dumpers are ideal for working in construction, environmentally sensitive, agricultural and recreational sites. They have great traction in adverse ground conditions and can travel on steep inclines where a wheeled dumper struggles. Offering low ground pressure rubber tracks, ensuring reduced soil compaction. **This model is Tier 4 Final/Stage 4, EU compliant.**



# 7 TONNE 360° SLEW

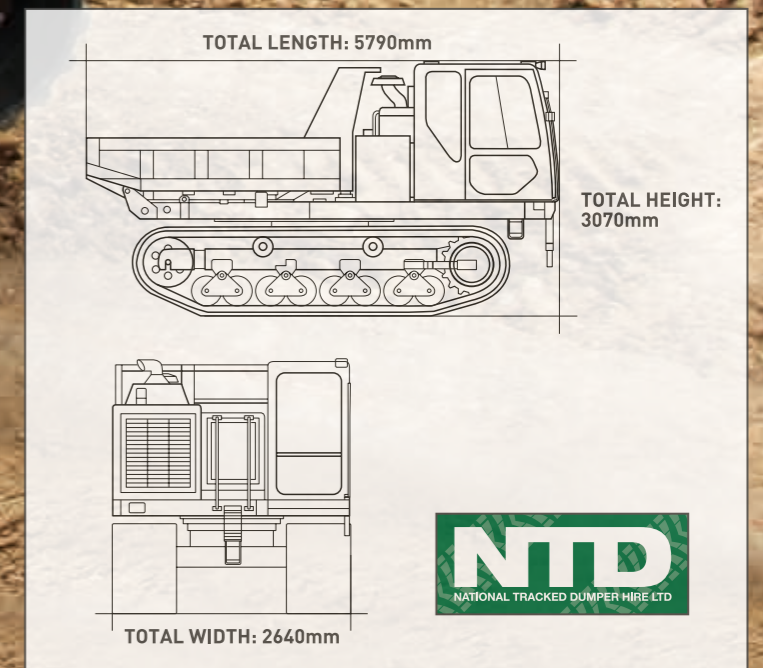


MODEL	MAX PAYLOAD	MACHINE WEIGHT	FUEL CAPACITY	MAX TRAVEL SPEED	GROUND PRESSURE UNLOADED	GROUND PRESSURE LOADED	SLEW RADIUS
MST-1500VDR	7000kg	11500kg	200 Litres	8.6 kph	0.27kg/cm <sup>2</sup>	0.45kg/cm <sup>2</sup>	3370mm

These mid-range 360° slewing tracked dumpers are a very popular model. This machine can fully tip a load at any radius, particularly useful on riverbanks where the operator may not have space to turn or where turning and reversing may be a risk. This offers huge safety and environmental benefits.

The operator is kept in a forward facing position at all times, resulting in faster speed of operation with comfort, there is almost never a need to reverse this machine.

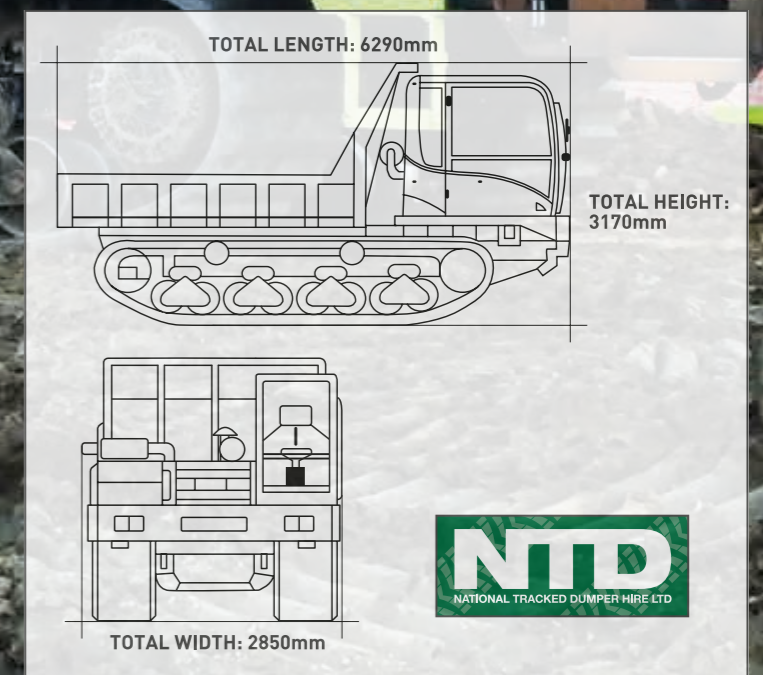
**This model is Tier 4 Final/Stage 4, EU compliant.**



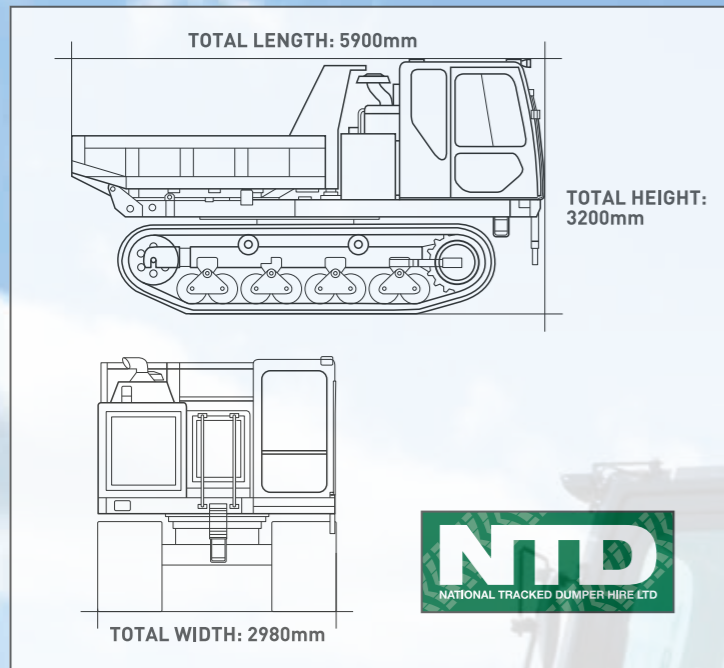
# 11 TONNE RIGID

MODEL	MAX PAYLOAD	MACHINE WEIGHT	FUEL CAPACITY	MAX TRAVEL SPEED	GROUND PRESSURE UNLOADED	GROUND PRESSURE LOADED
MST-2200VD	11000kg	14100kg	300 Litres	10 kph	0.33kg/cm <sup>2</sup>	0.60kg/cm <sup>2</sup>

If you require a tracked dumper capable of carrying a larger volume for bulk material handling. This machine offers a carrying capacity of 11 tonne and is a popular selection on larger sites working in tandem with other machines to ensure high levels of productivity. **This model is Tier 4 Final/Stage 4, EU compliant.**



# 11 TONNE 360° SLEW



MODEL	MAX PAYLOAD	MACHINE WEIGHT	FUEL CAPACITY	MAX TRAVEL SPEED	GROUND PRESSURE UNLOADED	GROUND PRESSURE LOADED	SLEW RADIUS
MST-2200VDR	11000kg	16000kg	432 Litres	10 kph	0.36kg/cm <sup>2</sup>	0.61kg/cm <sup>2</sup>	3373mm

The most productive tracked dumper in the UK today. With a 360° rotation, this tracked dumper can fully tip a load at any radius. Particularly useful on sites requiring a large volume carrying capacity where there are restrictions such as confined routes, tunnels and riverbanks. Where turning and reversing may be a risk for the operator, this offers huge safety and environmental benefits.

The operator is kept in a face-forwarding position at all times, resulting in faster speed of operation with comfort. There is almost never a need to reverse this machine.



# 13.2 TONNE 360° SLEW



TOTAL LENGTH: 5782mm

TOTAL HEIGHT: 3214mm

TOTAL WIDTH: 2570mm

MODEL	MAX PAYLOAD	MACHINE WEIGHT	FUEL CAPACITY	MAX TRAVEL SPEED	GROUND PRESSURE UNLOADED	GROUND PRESSURE LOADED	SLEW RADIUS
PANTHER T14R	13200kg	16860kg	300 Litres	13 kph	0.28kg/cm <sup>2</sup>	0.53kg/cm <sup>2</sup>	3200mm

This impressive sized tracked dumper offers the highest speed combined with the highest payload in its class and will set new standards for productivity and mobility. With its 13,200 kg capacity, this rubber tracked crawler carrier has the largest payload of any vehicle of this type in its category.

The rotating separation of this vehicle allows the operator to work in tight, sensitive areas where other vehicles do not have access. Together with a ground pressure of 7.46 psi and a strong pull ratio, these features allow this carrier crawler to be suitable for all major muck shifting, pipeline and most variations of projects, especially if the terrain is difficult, without damage to the environment.



# AERIAL IMAGES



# TRACKED CARRIERS

As well as NTD'S range of tracked dumpers we also offer a wide range of tracked carriers for hire, including:

- Utility Vehicles
- Welfare Vehicles
- Refuelling Vehicle
- Personal Carriers
- Platform Mounted Carrier
- Crane Mounted Carrier
- Pipeline support Carrier
- Amphibious Carrier

Please ask a member of our team for details or to discuss any special requirements that you may have as we are constantly updating our fleet of tracked dumpers and tracked carriers...



